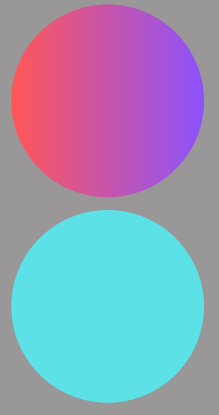


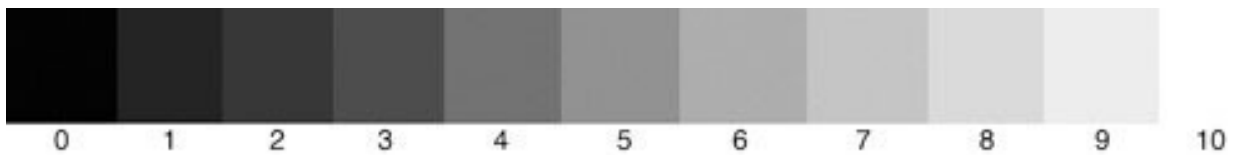
# MASTER COLOR IN 10 MINUTES



## Color Wheel

### Definitions:

- **Hue** - means color. Red, green, yellow, etc.
- **Value** - means how light or dark the shading is.
- **Chroma** - is the color's strength or color intensity. Colors can be super intense or muted.
- **Value** - the lightness or darkness of a color.
- **Color Intensity** - the saturation or purity of a color.
- **Neutralized color** - the color with less intensity that's either grayed down or mixed with its complement.
- **Local color** - the natural color of an object as it appears in daylight (green of the cucumber or blue of the blueberries). Art students see only local colors in objects rather than the colors of light and reflections.

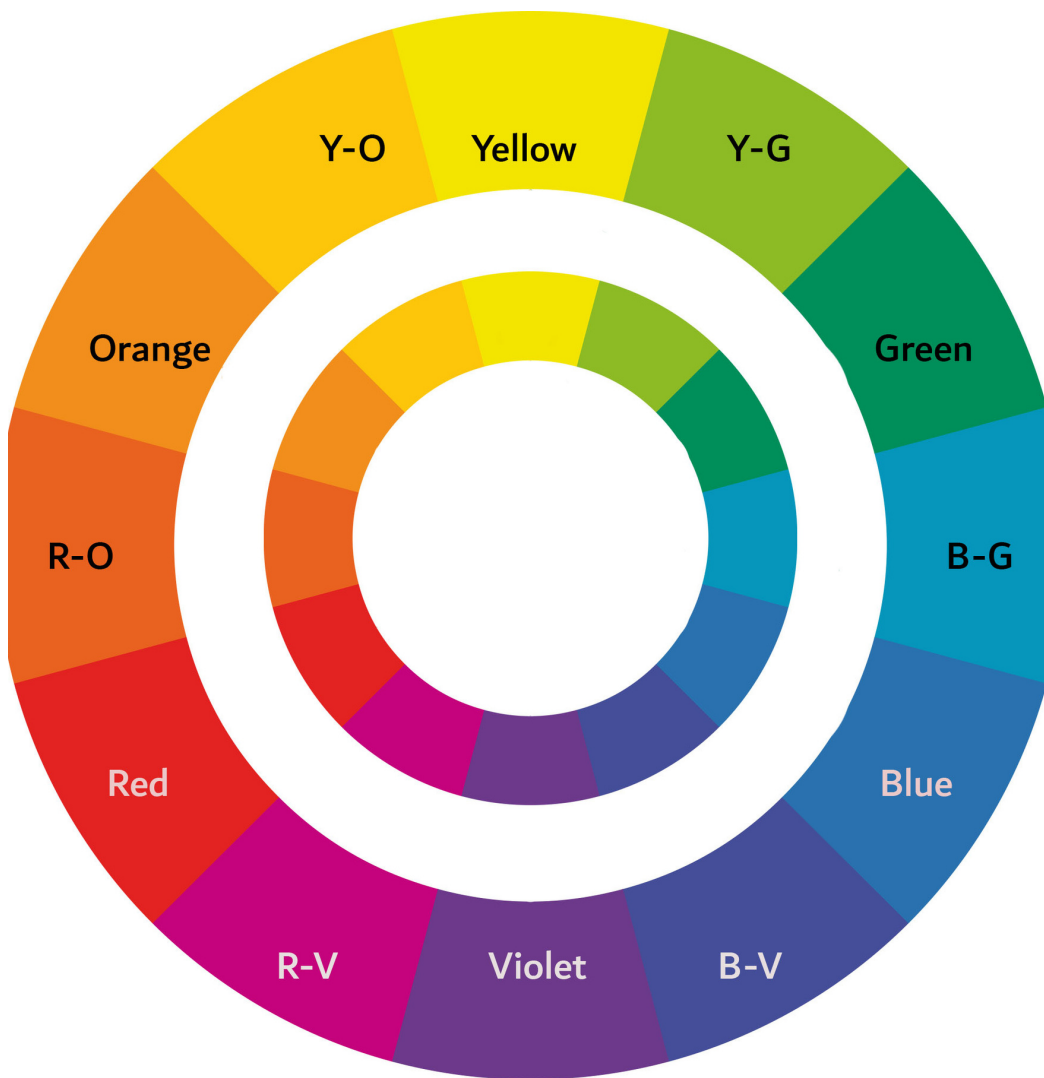


### Value scale



## Color Wheel

1. Mix basic colors Yellow-(Orange)-Red-(Purple)-Blue
2. Shade with one color using varied pencil pressure to achieve different tones
3. Shade with two colors to create a value range



Yellow	Orange	Red	Purple	Blue	Green

One color, different pencil pressure					

Two colors, different pencil pressure					

**Warm vs. cool color:**

Mix warm, cool and neutral

--	--	--	--	--	--

--	--	--	--	--	--

## Color desaturation:

Desaturate the color with either a compliment or grey



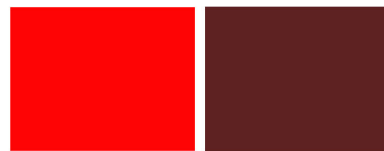
## Color mixing & shading:

Tint: Color + white | Shade: Color+Black

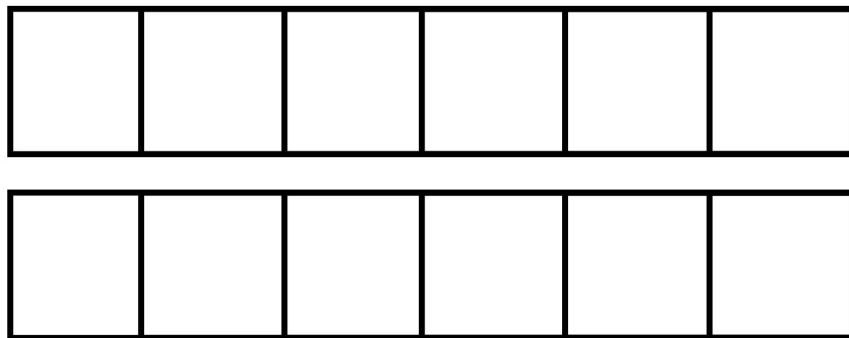
Tone: Color+Grey



Tint

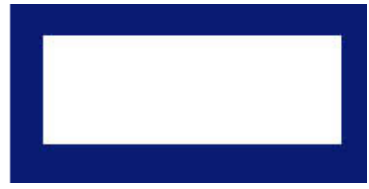


Shade



## Color relativity

The same color looks different depending on its surroundings. Color brightness and saturation of the surrounding hues affects our perception of key color.



Top: bright background Bottom: Original image with muted background

Top: Black background Bottom: White background





Check out artist's video classes like the Color Crush Course or the Colored Pencil Techniques in 90 days. Visit [VeronicasArt.com](https://VeronicasArt.com) and go to 'video courses'

# Veronica Winters

Questions? e-mail: [nika@veronicasart.com](mailto:nika@veronicasart.com) Painting